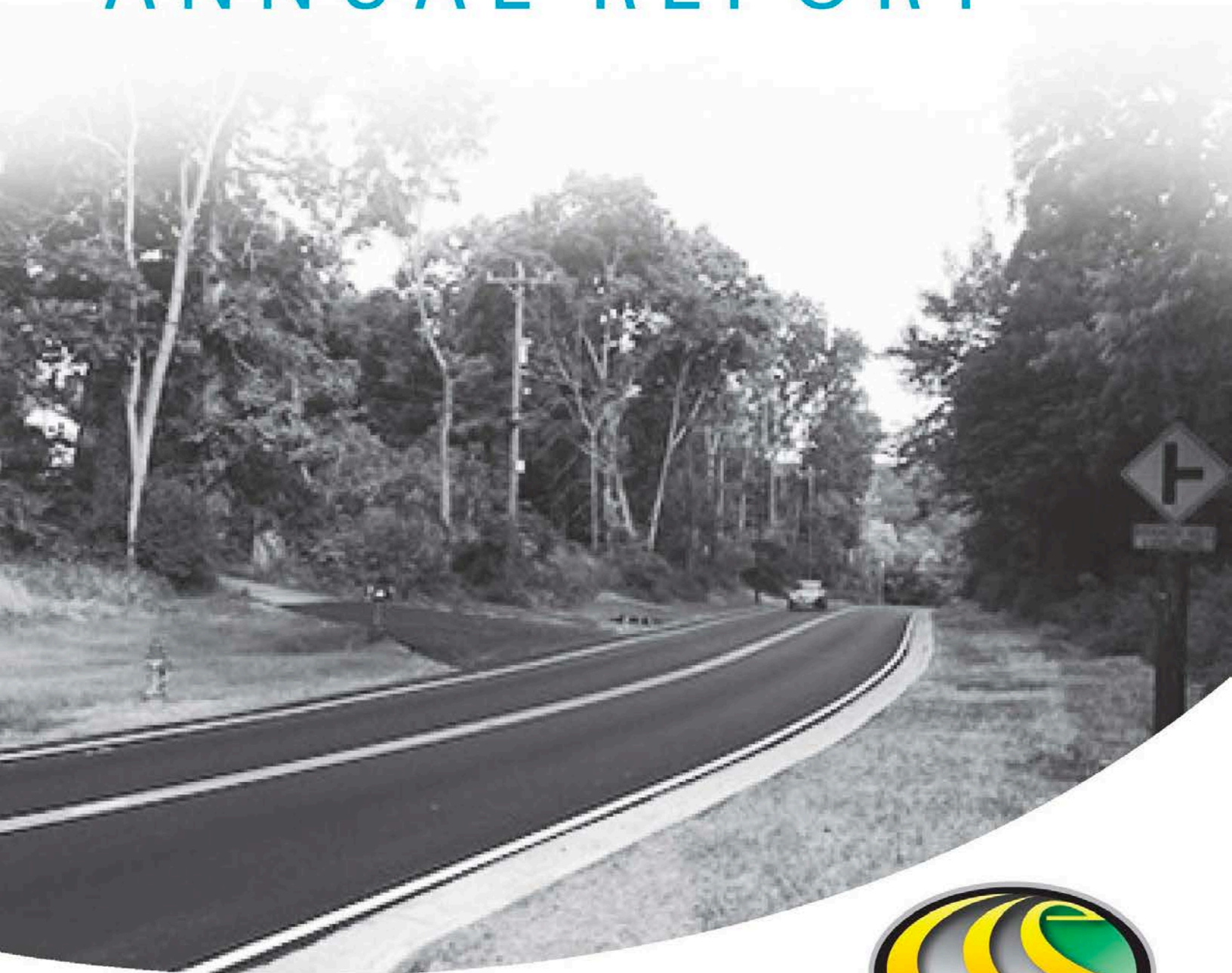


CLERMONT COUNTY ENGINEER'S OFFICE

# 2016 ANNUAL REPORT



[WWW.CLERMONTENGINEER.ORG](http://WWW.CLERMONTENGINEER.ORG)



# Table of Contents

- Introduction..... 3
  
- Engineer’s Office Functions..... 4
  
- Revenue Sources..... 5
  
- Road, Bridge & Culvert Conditions..... 6
  - Road Condition Report
  - Bridge Condition Report
  - Culvert Condition Report
  
- Capital Improvement Projects ..... 8
  
- County Maintenance Program..... 9
  
- Financials ..... 10
  - Resurfacing Program
  - Road Program
  - Landslide Program
  - Bridge Program
  - 2016 Expenses
  
- Proposed Capital Improvements ..... 14
  - Road Program
  - Landslide Program
  - Bridge Program
  
- Partnerships..... 16

# Introduction



Dear Commissioners,

Per the Ohio Revised Code Section 5543.02, I hereby present the 2016 Annual Report for your review.

The Clermont County Engineer's Office is responsible for the maintenance of our county's roadway network, as well as the repair and construction of our local bridges and culverts. This report details that work during 2016 and also provides an update on our Capital Improvement Program.

There has been an increasing amount of dialogue about gas tax revenues and the recognition that the federal gas tax has not increased since 1993, despite the reality that the cost of operating our office has increased over those 23 years. It is our priority to identify and ensure that adequate funding is available to provide safe and efficient travel throughout Clermont County.

Balancing the need to maintain our existing 385.5-mile roadway network with the priority of expanding our infrastructure to support safer travel, economic development and job creation is a significant responsibility of our planning and engineering work. The key to accomplishing both requires a thorough capital improvement strategy, a strong maintenance plan and the dedication to execute both. The results of this commitment are contained in the following report.

It is an honor to serve Clermont County as the County Engineer and I look forward to reviewing our accomplishments and upcoming priorities with you.

Sincerely,

A handwritten signature in black ink that reads "Patrick J. Manger". The signature is written in a cursive style.

Patrick J. Manger, P.E., P.S.  
Clermont County Engineer

# ENGINEER'S OFFICE FUNCTIONS

## Engineering & Design

- Project Planning & Engineering
- Scheduling & Budgeting
- Grants & Federal Aid
- Bridge Design
- Bridge Inspection
- Bridge Replacement/Rehab
- Culvert Design
- Roadway and Intersection Design
- Consultant Plan Review
- Traffic Engineering
- GIS Development
- Road Atlas
- Surveying
- Survey Plats
- Right-of-Way
- Engineering Review
- Residential/Commercial Development
- Subdivision Street Inspection
- Drainage Review

## Operations & Maintenance

- Road, Bridge and Culvert Maintenance
- Emergency Road/Bridge Repairs
- Traffic Operations
- Truck Weight Limit Enforcement
- Fleet Maintenance
- Safety - Personnel Training
- Snow and Ice Removal
- Roadside Mow/Trim/Guardrail
- Roadside Berming/Ditching
- Traffic Signs/Pavement Markings

## Administration & Finance

- Permanent Public Records
- Budget, Payroll and Accounting
- General Office Administration
- Website/Social Media
- Human Resources
- Information Systems
- Township and Government Liaison

## Construction & Inspection

- Capital Improvement Contracts
- Pay Items
- Contractor Payments
- Right-of-way Acquisition
- Utility Relocation Coordination
- Utility Permits
- Driveway Permit Review
- Special Hauling Permit
- Permits Download (online)

## Tax Map

- GIS Parcel Layer
- Real Property Transfers
- Survey/Easement Plats
- Property Owner History

# 2016 REVENUE SOURCES



**\$7.22 Million**

VEHICLE LICENSE FEES



**\$2.34 Million**

FUEL TAX



**\$1.2 Million**

PROJECT REIMBURSEMENTS



**\$470,000**

MISCELLANEOUS SOURCES  
(E.G., INSPECTION FEES, SALE OF EQUIPMENT, ETC.)

## TOTAL REVENUE:

**\$11,230,000**

# ROAD, BRIDGE & CULVERT CONDITIONS

## Road Condition Report

Miles: **385.5**

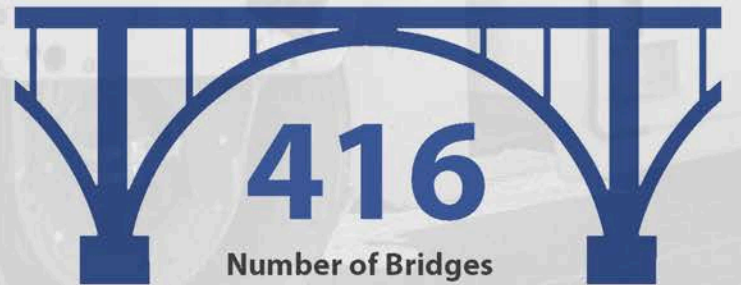
Average Age of Road: **10.12 Years**

Average Condition Rating: **65.55**  
(Pavement Condition Rating is out of 100 with 100 being new pavement.)

Of the **416** bridges maintained by the Clermont County Engineer's Office, **285** have a rating of good or better.



## Bridge Condition Report



**8**

Posted <20 Ton

**7.35**

Average Bridge Rating  
(9-New Bridge, 4-Posted Loading, 1-Critical)

**10**

Bridges Rehabbed or Replaced in 2016

**44**

Number of Load Restricted Bridges  
(Legal load limit for a bridge is 40 tons, otherwise must be posted.)



# Culvert Condition Report

# 2092 Culverts

## 174

**Number of Critical Pipes**  
*(Rated at 3 or less)*

## 7.13

**Average Condition Rating**  
*(9-Excellent, 5-Fair, 1-Critical Failure)*



*For a full list of road, bridge and culvert conditions, please contact the Clermont County Engineer's Office.*



# CAPITAL IMPROVEMENT PROJECTS



**Road Projects**  
**\$6,787,714**



**Bridge Projects**  
**\$1,386,184**



**New Equipment Purchases**  
**\$626,133**

**TOTAL INVESTMENT:**  
**\$8,800,031**

**CAPITAL IMPROVEMENT GRANTS: \$5,426,349**

Of the \$8.8 million invested in capital improvements, nearly \$5.5 million was received from non-local sources. In 2016, the Clermont County Engineer's Office was able to secure funding for approximately 62% of its capital improvement program from outside sources.

# COUNTY MAINTENANCE PROGRAM

In addition to capital improvement projects, the Clermont County Engineer's Office is also responsible for maintenance of 385.5 roadway miles, more than 400 bridges and nearly 2,100 culverts.

CCEO maintenance work falls into nine different categories.

**TOTAL MAN HOURS: 44,662**



**Berming**  
1,780



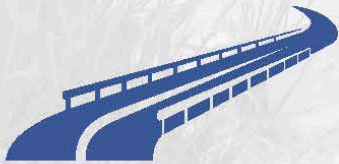
**Bridge & culvert  
maintenance**  
5,020



**County road  
maintenance**  
3,483



**Ditching**  
6,676



**Guardrail**  
1,905



**Mowing**  
8,128



**Potholes**  
8,144



**Signs &  
pavement  
markings**  
6,614



**Snow &  
ice removal**  
2,912



*Did you know?*

Clermont County's Highway Operations Department set out on 10 different occasions for snow and ice removal, using almost 3,500 tons of salt.

# FINANCIALS

In 2016, the Clermont County Engineer's Office managed an aggressive resurfacing program, addressing nearly 31 roadway miles on 18 different county roads. For perspective, an average annual resurfacing program is typically around \$1 million. In 2016, our office quadrupled that amount and was able to improve the condition of more of our roads due to our ability to identify and secure alternative methods of project financing that lead to safer roads for those who travel in Clermont County.

## Resurfacing Program

<b>Ellick Road</b> <i>SR 222 to Dead End</i> 3.40 miles  <b>Project cost:</b> \$275,000	<b>Garrison Spurling</b> <i>Edenton Pleasant to Warren County Line</i> 0.90 miles  <b>Project cost:</b> \$40,000	<b>Lakin Chapel</b> <i>Swings Corner to SR 133</i> 0.44 miles  <b>Project cost:</b> \$90,000	<b>Taylor Pike</b> <i>SR 133 to SR 133</i> 5.33 miles  <b>Project cost:</b> \$360,000	<b>Bethel Maple</b> <i>Sodom to Bethel Corp Line</i> 1.58 miles  <b>Project cost:</b> \$95,000
<b>Old SR 32 East</b> <i>Batavia Road to Brown County Line</i> 3.51 miles  <b>Project cost:</b> \$865,000	<b>Old SR 32 West</b> <i>Batavia Corp Line to Batavia Road</i> 2.28 miles  <b>Project cost:</b> \$960,000	<b>Sugartree Road</b> <i>SR 125 to Williamsburg Bantam</i> 1.26 miles  <b>Project cost:</b> \$115,000	<b>Williamsburg Spur</b> <i>Old SR 32 to East Fork Lake</i> 0.26 miles  <b>Project cost:</b> \$30,000	<b>Bethel New Richmond (East)</b> <i>Laurel-Lindale to SR 222</i> 1.76 miles  <b>Project cost:</b> \$210,000
<b>Bethel New Richmond (West)</b> <i>New Richmond Line to Laurel-Lindale</i> 2.93 miles  <b>Project cost:</b> \$320,000	<b>Branch Hill Loveland</b> <i>Loveland Corp Line to Branch Hill Guinea</i> 1.85 miles  <b>Project cost:</b> \$280,000	<b>Clermontville Laurel</b> <i>Spruce Hill to SR 232</i> 2.99 miles  <b>Project cost:</b> \$200,000	<b>Frank Willis Memorial</b> <i>US 52 to Franklin Laurel</i> 2.46 miles  <b>Project cost:</b> \$360,000	<b>Various Base Repairs</b> <i>(Twin Bridges, Bootjacks, Newtonsville, Summit Road)</i>  <b>Project cost:</b> \$421,285

### PROJECT TOTALS:

18 ROADS | 30.95 MILES | \$4,621,285

## Road Program



In cooperation with the Clermont County Transportation Improvement District, the Engineer's Office made roadway improvements in two critical areas of travel in Clermont County – the Branch Hill Guinea corridor and along Woodville Pike.

### Branch Hill Guinea Drainage Project

**\$941,230**

*This project includes roadway and shoulder widening with accompanying drainage improvements along Branch Hill Guinea Pike from Branch Hill Miamiville to Branch Hill Loveland Road. This project started in 2015 and was completed in 2016.*

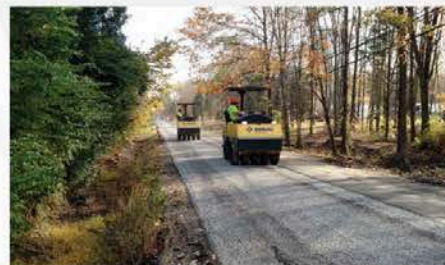
### Woodville Pike Reconstruction

**\$1,032,830**

*This project started at SR 28 and continued to SR 132. Improvements include replacement of two bridges as well as geometric improvements and shoulder widening.*

### PROJECT TOTALS

**\$1,974,060**



Woodville Pike reconstruction project



Woodville Pike reconstruction project



Completed work on Branch Hill Guinea

## Landslide Program

In 2016, the Clermont County Engineer's Office addressed two landslides in two townships at a total cost of nearly \$200,000.

### Frank Willis Road

Road No. C50  
Ohio Township

Project cost: \$123,974

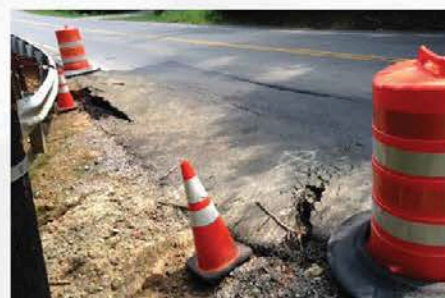
### Roundbottom Road

Road No. C106  
Union Township

Project cost: \$68,395

### PROJECT TOTALS:

**\$192,369**



Roundbottom Slide before construction



Completed Landslide project on Roundbottom Road

# FINANCIALS

## Bridge Program

In 2016, the Clermont County Engineer's Office completed maintenance and repairs of 13 bridges in seven townships at a total cost of \$1,386,184.



Taylor Pike Bridge Under Construction



No. 9 Road Bridge Under Construction

### Crane Schoolhouse

CC38-10  
Tate Township  
Project cost:  
\$90,438

### Woodville Pike

C133-0.65  
Miami Township  
Project cost:  
\$126,840

### Bethel New Richmond (Gunite)

C14-3.64  
Monroe Township  
Project cost:  
\$153,368

### Swings Corner Point Isabel

C119-1.57  
Franklin Township  
Project cost:  
\$80,852

### Sharps Cutoff Road

CC108-4  
Jackson Township  
Project cost:  
\$89,913

### Woodville Pike

C133-0.60  
Miami Township  
Project cost:  
\$124,000

### Clough Pike (Gunite)

C33-0.11  
Union Township  
Project cost:  
\$202,000

### Williamsburg Bantam

C130-0.73  
Tate Township  
Project cost:  
\$80,345

### Taylor Pike

C121-3.79  
Wayne Township  
Project cost:  
\$83,276

### Oak Corner

C97-0.27  
Tate Township  
Project cost:  
\$41,779

### Saltair Maple (Deck)

T46-1.40  
Tate Township  
Project cost:  
\$18,694

### Taylor Pike

C121-3.46  
Wayne Township  
Project cost:  
\$55,115

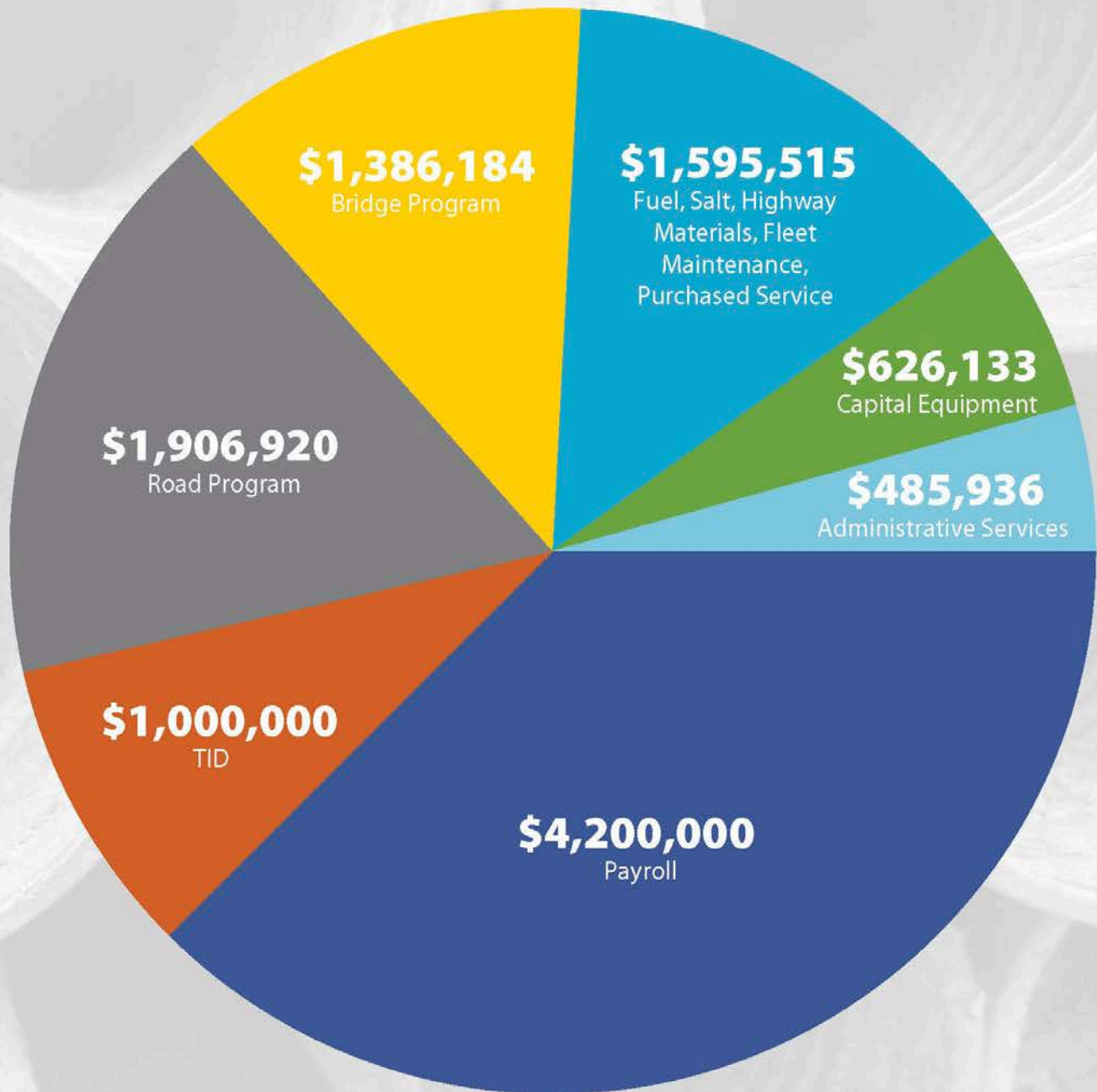
### No. 9 Road

T145-0.06  
Wayne Township  
Project cost:  
\$239,564

## PROJECT TOTALS:

13 Bridges | 7 Townships | \$1,386,184

# 2016 EXPENSES



**TOTAL EXPENSES: \$11,200,688**

# 2017 PROPOSED CAPITAL IMPROVEMENTS

Maintaining a county roadway network is not unlike maintaining a home; balancing routine maintenance with planned capital improvements provides the foundation for a structurally-sound network for years to come.



## Road Program

This year will see the resurfacing of approximately 21 roadway miles in Clermont County. This annual program is expected to total nearly \$2 million and pave the way for safer travel on 11 county roads.



<p><b>Belfast-Owensville Road</b>                      US 50 to SR 131                      4.23 miles                      Project cost: \$315,000</p>	<p><b>Gleneste Withamsville Road</b>                      SR 125 to Shayler                      0.40 miles                      Project cost: \$55,000</p>	<p><b>Goshen Road (South)</b>                      SR 131 to Cedarville Road                      1.52 miles                      Project cost: \$140,000</p>	<p><b>Goshen Road (Upper)</b>                      Cedarville Road to Woodville Pike                      1.29 miles                      Project cost: \$110,000</p>
<p><b>McHenry</b>                      Shiloh to Edenton                      Pleasant Plain                      1.68 miles                      Project cost: \$140,000</p>	<p><b>Newtonsville Road</b>                      Newtonsville Line to SR 727                      2.26 miles                      Project cost: \$170,000</p>	<p><b>Obannonville Road</b>                      Loveland Line to                      Warren County Line                      2.36 miles                      Project cost: \$235,000</p>	<p><b>Antioch Road</b>                      SR 774 to Bethel Maple                      1.73 miles                      Project cost: \$150,000</p>
<p><b>Bauer Road</b>                      SR 32 to SR 276                      1.86 miles                      Project cost: \$165,000</p>	<p><b>Donald Road</b>                      Jones Florer to Bethel Maple                      1.86 miles                      Project cost: \$185,000</p>	<p><b>Jackson Pike</b>                      SR 133 to Brown County Line                      1.48 miles                      Project cost: \$155,000</p>	

## PROJECT TOTALS:

11 Roads | 20.67 Miles | \$1,820,000

## Landslide Program

In 2017, the Engineer's Office anticipates spending \$345,000 to address three landslides in three different townships.

<p><b>Locust Corner Road</b> C73 Pierce Township <b>Project cost: \$150,000</b></p>		<p><b>Felicity Cedron Road</b> C45 Franklin Township <b>Project cost: \$75,000</b></p>		<p><b>Beechwood Road</b> C8 Union Township <b>Project cost: \$120,000</b></p>	<p><b>PROJECT TOTALS:</b></p> <ul style="list-style-type: none"> <li>▶ 3 Landslides</li> <li>▶ 3 Townships</li> <li>▶ \$345,000</li> </ul>
---	---	--	---	---	--

## Bridge Program

In 2017, the Engineer's Office will address 11 bridges in eight townships, investing \$1,437,000 in the repair of these aging structures.

**Johnson Road**  
T148-0.31  
Wayne Township  
**Project cost: \$250,000**

**Graves Road**  
T220-0.02  
Stonelick Township  
**Project cost: \$200,000**

**Brown Road (Deck)**  
T43-0.22  
Tate Township  
**Project cost: \$40,000**

**Chapel Woods**  
T2195-0.30  
Batavia Township  
**Project cost: \$350,000**

**McHenry**  
C79-0.27  
Goshen Township  
**Project cost: \$90,000**

**Patterson**  
T49-0.27  
Tate Township  
**Project cost: \$120,000**

**Jones Florer**  
C63-1.21  
Tate Township  
**Project cost: \$90,000**

**Bauer Road**  
T146-0.08  
Wayne Township  
**Project cost: \$80,000**

**Shinkles Ridge**  
C109-0.01  
Franklin Township  
**Project cost: \$80,000**

**Obannonville**  
CC98-11  
Miami Township  
**Project cost: \$91,000**

**Heritage Glen**  
Union Township  
**Project cost: \$46,000**



Existing Shinkles Ridge Bridge



Existing Johnson Road Bridge

**PROJECT TOTALS:**  
11 Bridges | 8 Townships | \$1,437,000

# PARTNERSHIPS

The Clermont County Engineer serves as the Secretary-Treasurer on the board of the Clermont County Transportation Improvement District (CCTID). The CCTID was established in 2006 to support infrastructure improvements that promote economic development.

The CCTID works across geographic and political lines to improve the quality of life in Clermont County by stimulating economic development through transportation improvements. Projects advanced by the CCTID ease congestion, expand access to current and future business and shopping locations, and improve safety for all who travel through Clermont County.

The Engineer's Office has worked closely with the CCTID to manage 60 separate projects in Clermont County since 2006. CCTID projects have generated \$140 million in investment in our area.

## CCTID BY THE NUMBERS

### 60 SEPARATE PROJECTS IN CLERMONT COUNTY SUPPORTED BY THE CCTID SINCE 2006



39 COMPLETED  
PROJECTS



15 PROJECTS IN THE  
DESIGN STAGE



6 ACTIVE PROJECTS  
UNDER CONSTRUCTION

### CCTID PROJECTS HAVE GENERATED \$140 MILLION IN INVESTMENT IN OUR AREA



\$70 MILLION IN PROJECT  
FUNDING PROVIDED BY STATE &  
FEDERAL GRANTS



\$50 MILLION  
INVESTED BY THE CCTID



\$20 MILLION IN FUNDING  
SUPPORT FROM OTHER  
LOCAL SOURCES



## Clermont County, Ohio

# ROAD HISTORY

Two main thoroughfares were created in Clermont County over 200 years ago – and still exist today. The very first road in Clermont County, State Route 32, was built by John Donnels, Daniel Kain and Robert McKinney. At its inception in 1797, this 78-mile road was known as Donnels' Trace and spanned from Ohio's first state capital, Chillicothe, to Newtown (formerly called Mercersburg). Traffic on this road increased substantially, which earned it the designation of State Route 74 in 1920. Its name changed once more in 1960 to State Route 32 and then later changed once more to Old State Route 32 (to avoid confusion with another State Route 32 in northern Ohio). Old State Route 32 is now one of the major east-west thoroughfares in and beyond Clermont County. A small portion on the western end was converted into a turnpike in 1834 and is still know by some as the "Cincinnati-Batavia Pike."

The second road in Clermont County, State Route 133, is a major north-south thoroughfare that is rich in history. It began as a trail pounded by buffalo and other animals heading south to the Blue Licks in Kentucky. Used by Indian warriors hunting buffalo and by early travelers in the region, it was originally nicknamed "Bullskin Trail" by a group of hunters and surveyors (led by Thomas Bullitt) in mid-1773, who were said to have been camping near the Ohio River and saw buffalo hides, or bullskins, hanging to dry. It remained "Bullskin Trail" until around 1920 when it, too, earned designation as a state route.

During the War of 1812, Bullskin Trail was indisputably the only trail from the Ohio River to Lake Erie to be used by the American Army for military and supply transport, as all other trails had been cut off by the British Army and its Canadian and Indian allies. William Blanchard, just a teenager, led wagon trains with supplies for Oliver Hazard Perry's fleet on Lake Erie. The trail was also used by Simon Kenton, Cornelius Washburn, Daniel Boone, Tecumseh, Blue Jacket, and others and also by escaped slaves as a route on the Underground Railroad. The southern terminus is the Ohio River in the village of Rural, where it can be seen in its original condition.

*Source: Richard Crawford, Clermont County Historian*



The Stonelick-Williams Corner Covered Bridge, Clermont County's only covered bridge

# CONTACT US!

**Administrative Office**  
2381 Clermont Center Drive  
Batavia, Ohio 45103  
513-732-8857  
513-732-8875 (fax)  
[www.clermontengineer.org](http://www.clermontengineer.org)

**Highway Department**  
4009 Filager Road  
Batavia, Ohio 45103  
513-732-8869





PATRICK J. MANGER, P.E., P.S.