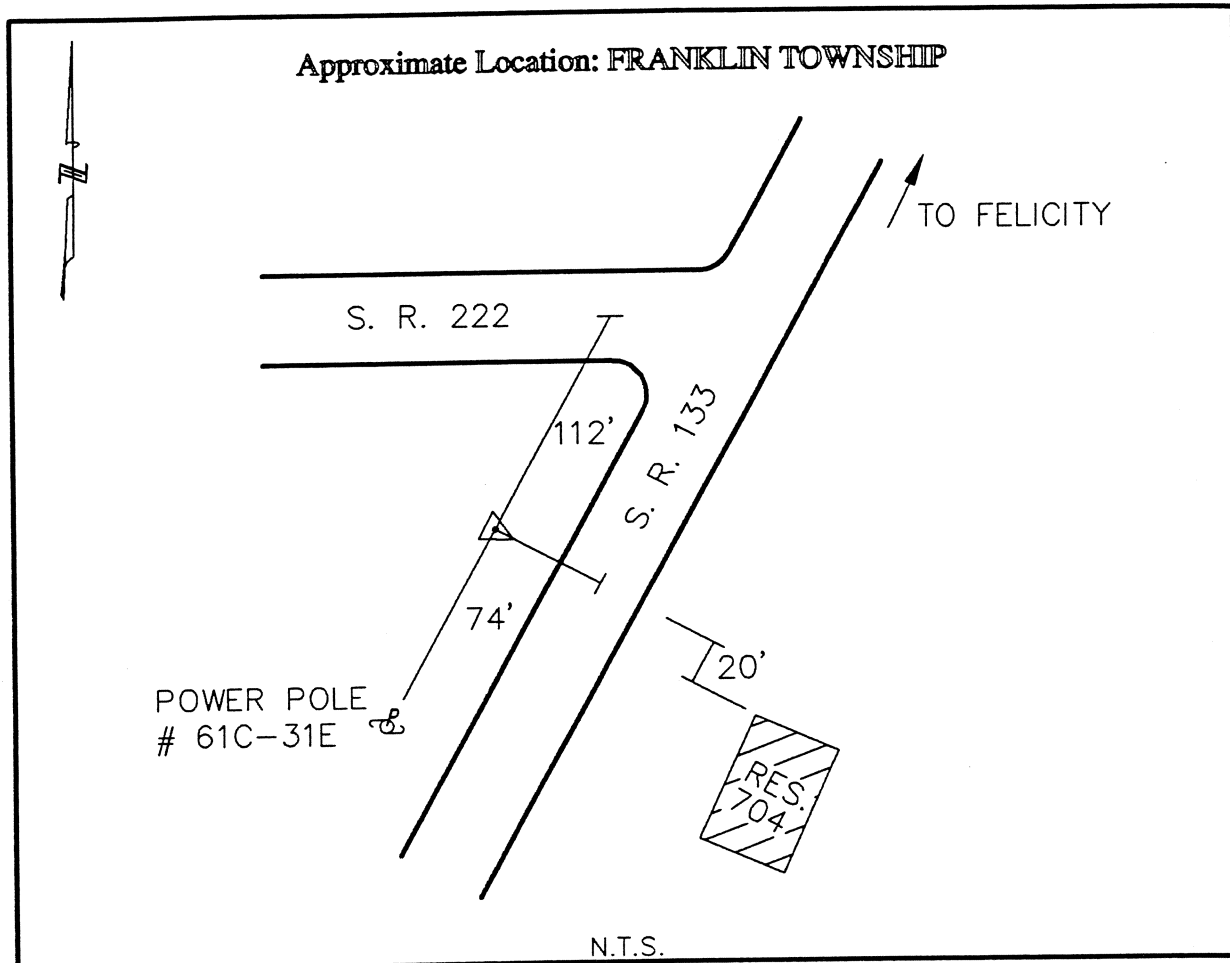




CLERMONT COUNTY ENGINEER CONTROL STATION DATA SHEET

Approximate Location: FRANKLIN TOWNSHIP



Station Name: 289

NAD 1983 (First Order)	
State Plane Zone:	Ohio South 3402
Latitude (dms)	N 38 49 19.14930
Longitude (dms)	W 84 05 55.40374
Easting in meters	461171.509
Northing in meters	92480.933
Easting in US survey ft	1513026.858
Northing in US survey ft	303414.527
Scale	0.99998375
Convergence	-1 0 51.916114

NAVD 1988	
Elevation in meters	266.646
Elevation in feet	874.821
Geoid Ht in meters	-34.119
Elevations determined with GPS	

Azimuth: N 14° 32' 36" E to Station 289A.