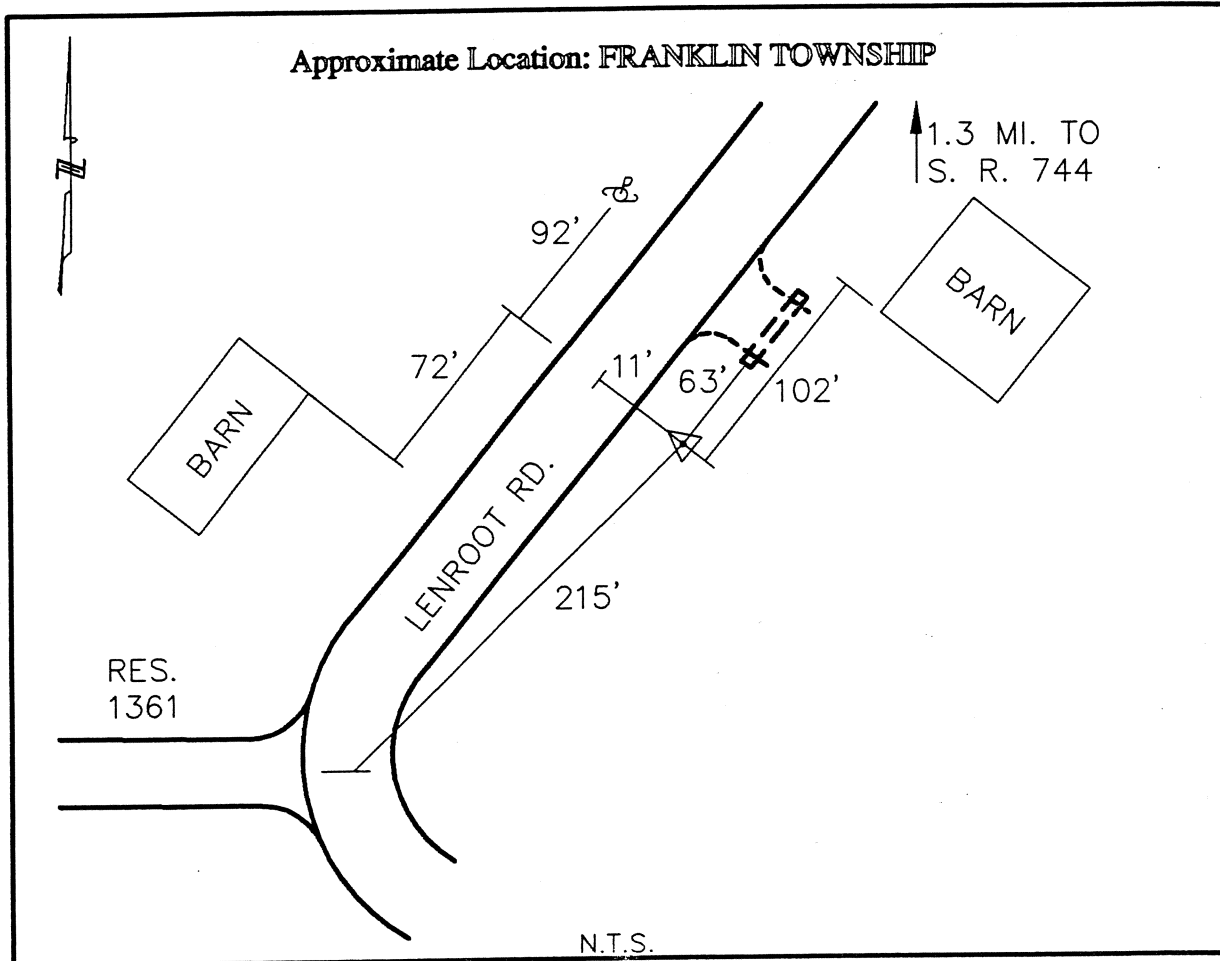




CLERMONT COUNTY ENGINEER  
CONTROL STATION DATA SHEET



Station Name: 285

|                          |                  |
|--------------------------|------------------|
| NAD 1983 (First Order)   |                  |
| State Plane Zone:        | Ohio South 3402  |
| Latitude (dms)           | N 38 52 5.19105  |
| Longitude (dms)          | W 84 03 52.94335 |
| Easting in meters        | 464213.846       |
| Northing in meters       | 97548.518        |
| Easting in US survey ft  | 1523008.258      |
| Northing in US survey ft | 320040.429       |
| Scale                    | 0.99997624       |
| Convergence              | 0-59 34.212603   |

|                                |         |
|--------------------------------|---------|
| NAVD 1988                      |         |
| Elevation in meters            | 267.545 |
| Elevation in feet              | 877.771 |
| Geoid Ht in meters             | -34.053 |
| Elevations determined with GPS |         |

Azimuth: N 32° 51' 37" E to Station 285A.