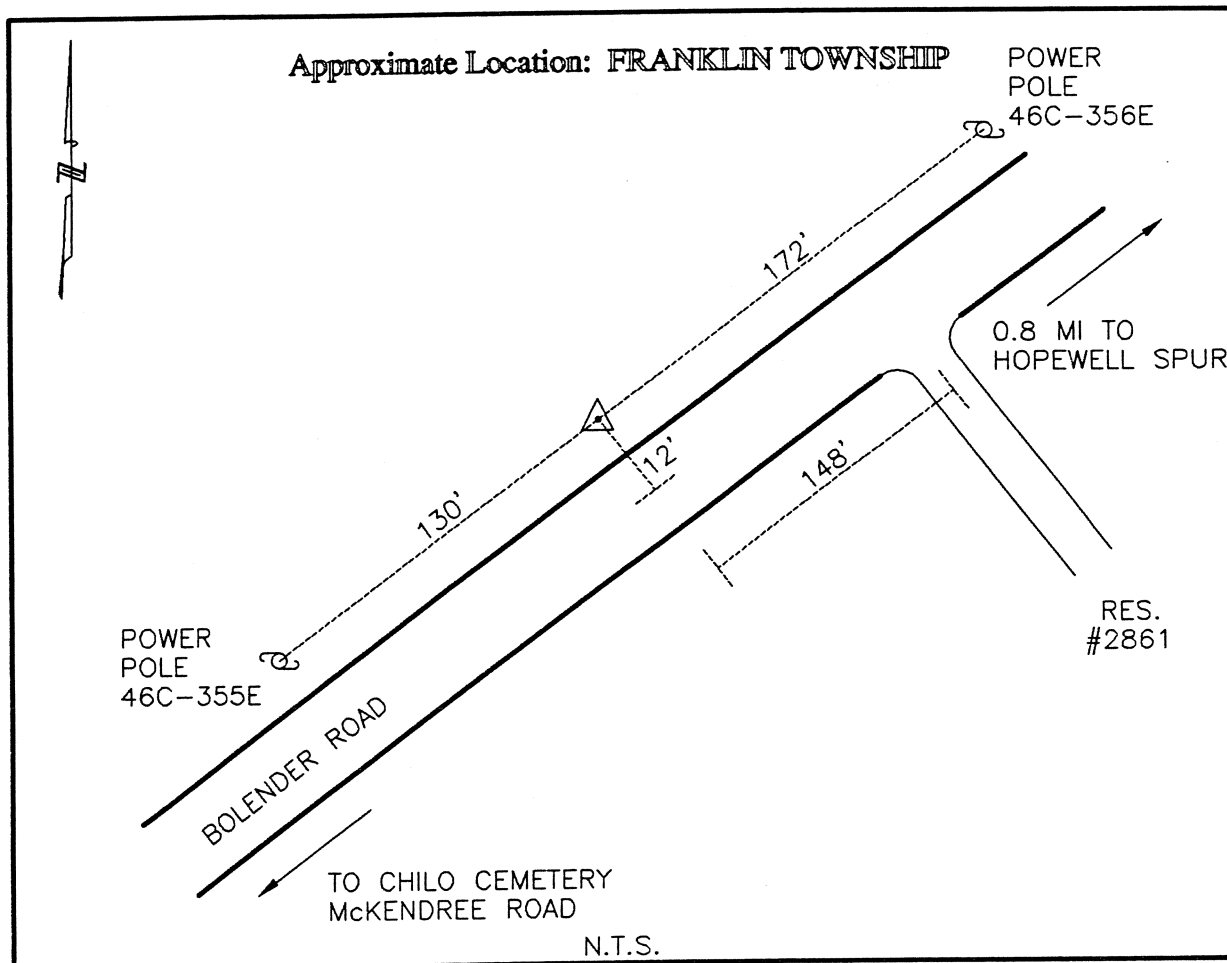




# CLERMONT COUNTY ENGINEER

## CONTROL STATION DATA SHEET



Station Name: 274

NAD 1983 (First Order)  
 State Plane Zone: Ohio South 3402  
 Latitude (dms) N 38 50 4.77609  
 Longitude (dms) W 84 07 55.57883  
 Easting in meters 458298.457  
 Northing in meters 93939.519  
 Easting in US survey ft 1503600.853  
 Northing in US survey ft 308199.905  
 Scale 0.99998162  
 Convergence -1 2 8.169558

NAVD 1988  
 Elevation in meters 264.875  
 Elevation in feet 869.011  
 Geoid Ht in meters -34.149  
 Elevations determined with GPS

Azimuth: N 52° 43' 47" E to Station 274A.