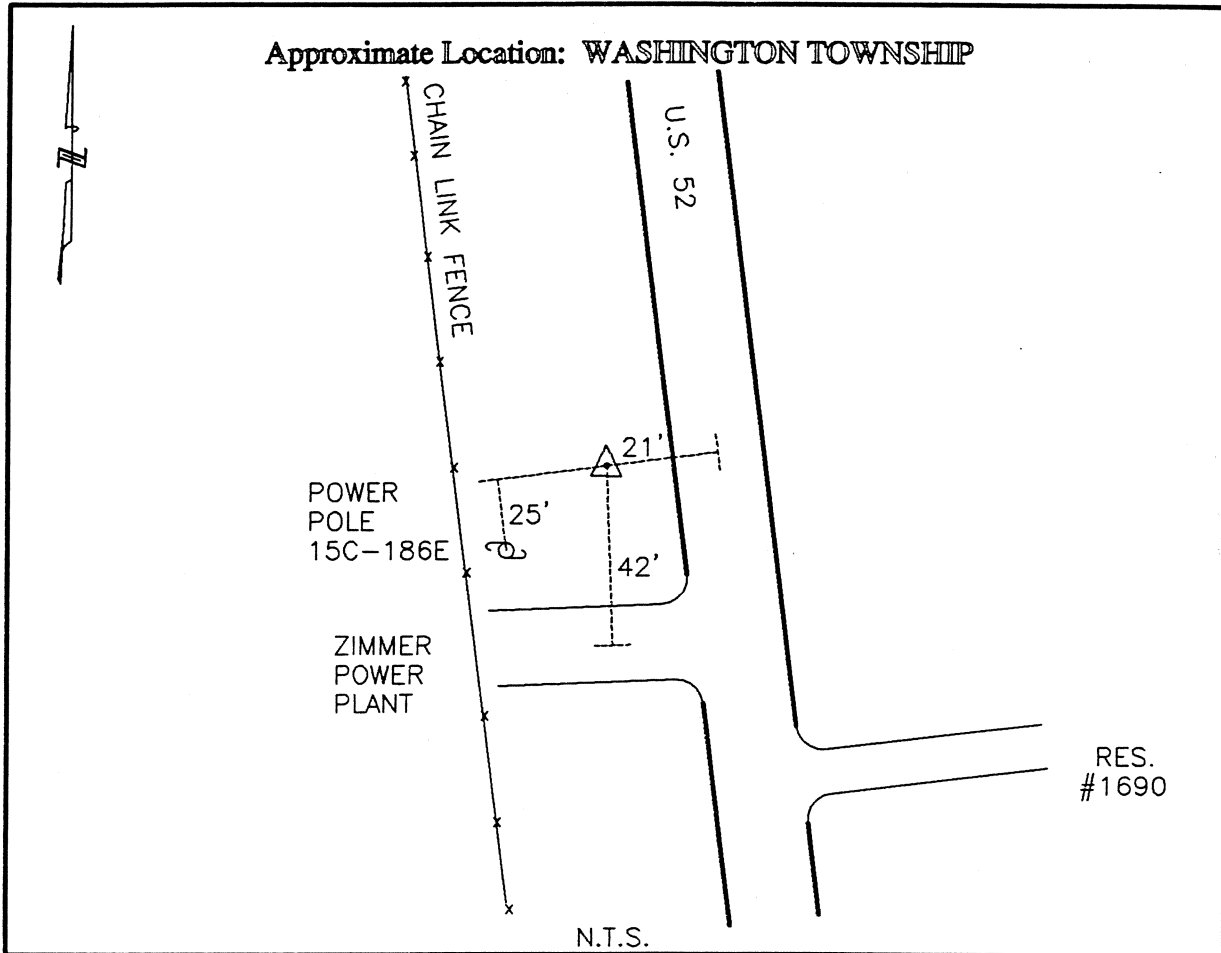




CLERMONT COUNTY ENGINEER
CONTROL STATION DATA SHEET



Station Name: 262

NAD 1983 (First Order)
 State Plane Zone: Ohio South 3402
 Latitude (dms) N 38 52 49.06921
 Longitude (dms) W 84 13 38.18304
 Easting in meters 450133.742
 Northing in meters 99158.465
 Easting in US survey ft 1476813.784
 Northing in US survey ft 325322.397
 Scale 0.99997436
 Convergence -1 5 45.558622

NAVD 1988
 Elevation in meters 155.234
 Elevation in feet 509.297
 Geoid Ht in meters -34.235
 Elevations determined with GPS

Azimuth: S 14° 36' 25" E to Station 262A.