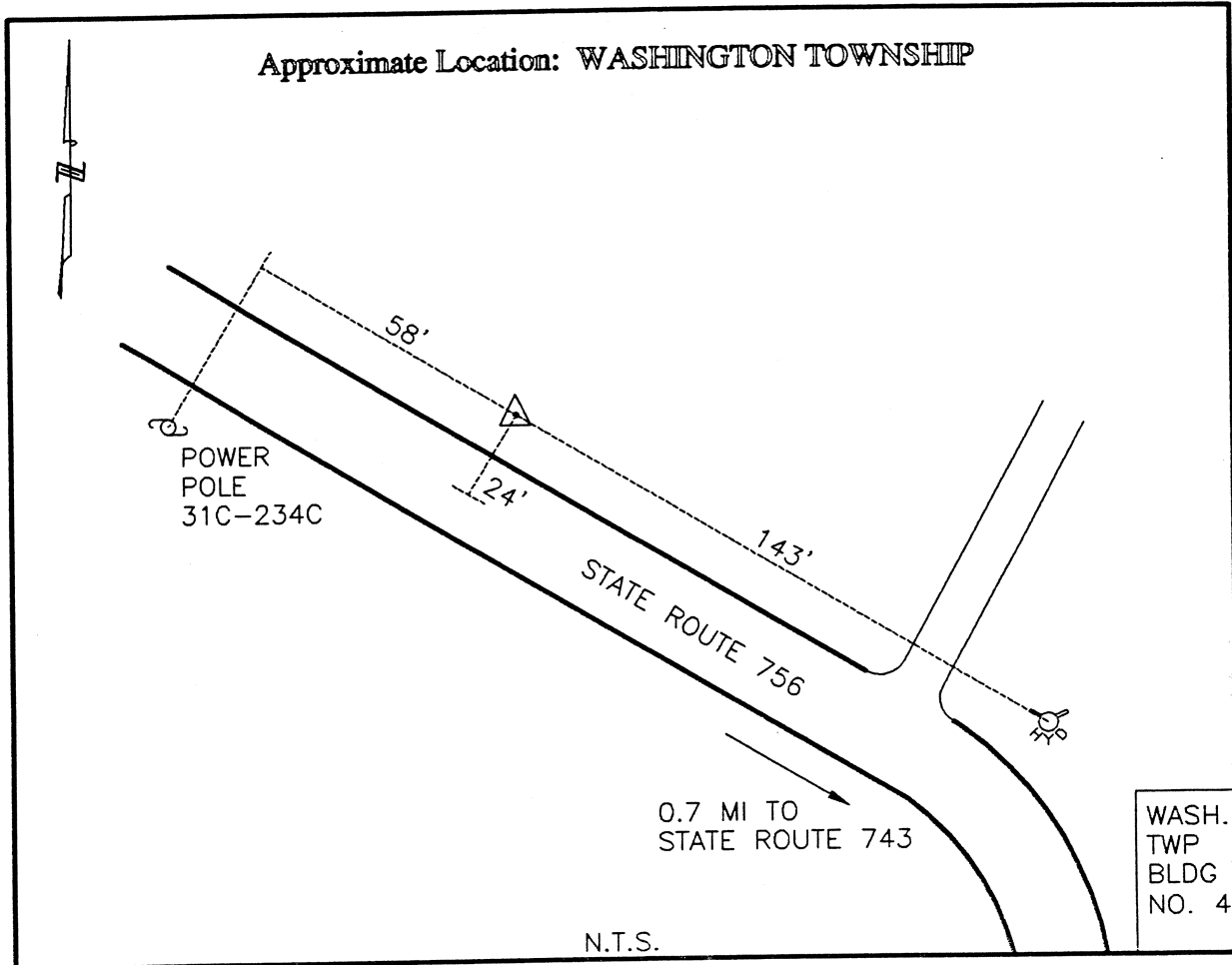




CLERMONT COUNTY ENGINEER
CONTROL STATION DATA SHEET



Station Name: 258

NAD 1983 (First Order)	Ohio South 3402
State Plane Zone:	N 38 52 42.65083
Latitude (dms)	W 84 11 6.57459
Longitude (dms)	Easting in meters 453783.579
Easting in meters	Northing in meters 98891.537
Northing in meters	Easting in US survey ft 1488788.291
Easting in US survey ft	Northing in US survey ft 324446.651
Northing in US survey ft	Scale 0.99997463
Scale	Convergence -1 4 9.360096
Convergence	

NAVD 1988	
Elevation in meters	248.825
Elevation in feet	816.353
Geoid Ht in meters	-34.194
Elevations determined with GPS	

Azimuth: S 70° 38' 41" W to Station 258A.