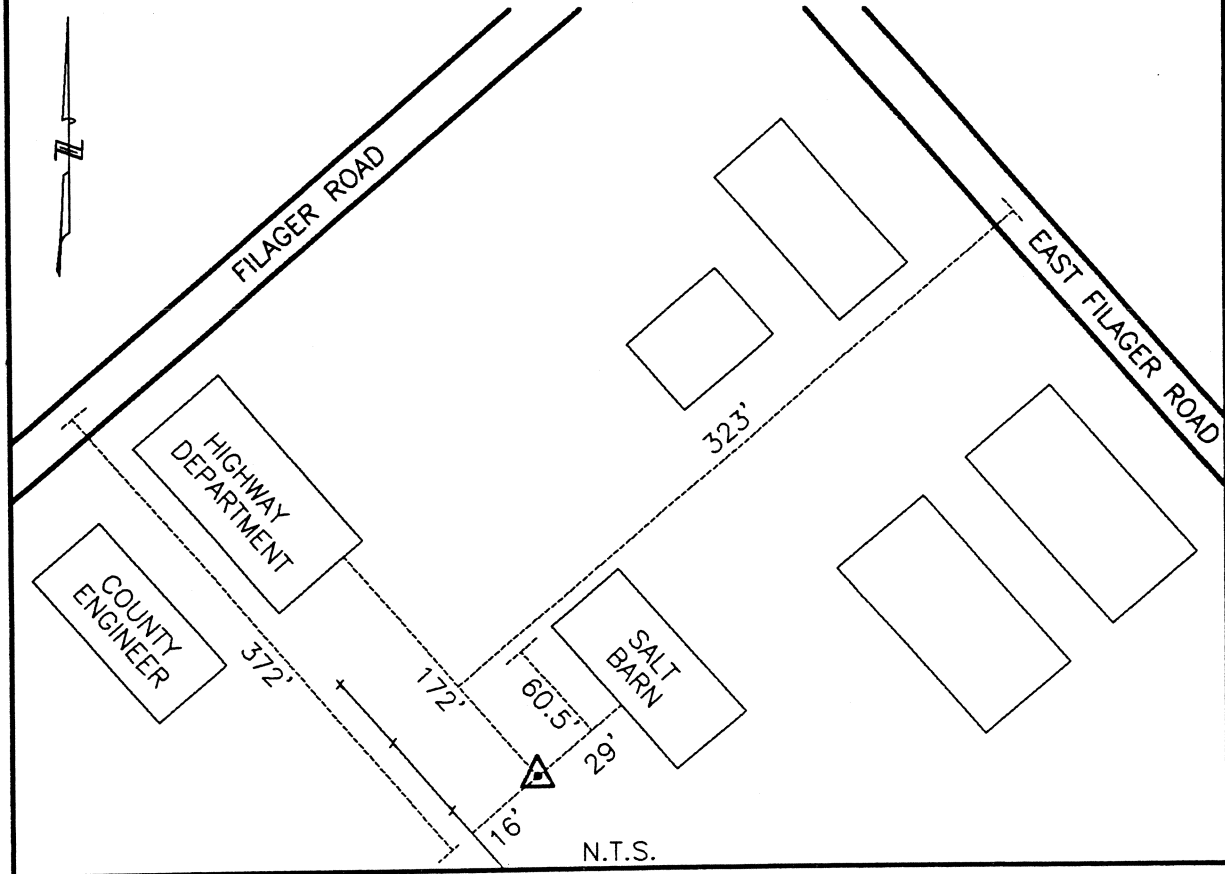




CLERMONT COUNTY ENGINEER  
CONTROL STATION DATA SHEET

Approximate Location: BATAVIA TOWNSHIP



Station Name: 208

NAD 1983 (First Order)

State Plane Zone: Ohio South 3402  
 Latitude (dms) N 39 05 38.50357  
 Longitude (dms) W 84 11 12.79497  
 Easting in meters 454080.588  
 Northing in meters 122814.623  
 Easting in US survey ft 1489762.729  
 Northing in US survey ft 402934.309  
 Scale .99994870  
 Convergence (dms) -1 4 13.307051

NAVD 1988

Elevation in meters 171.972  
 Elevation in feet 564.211  
 Geoid Ht. in meters -34.125  
 Elevations determined with GPS

Azimuth: S 02' 51' 08" E to Station 208A.