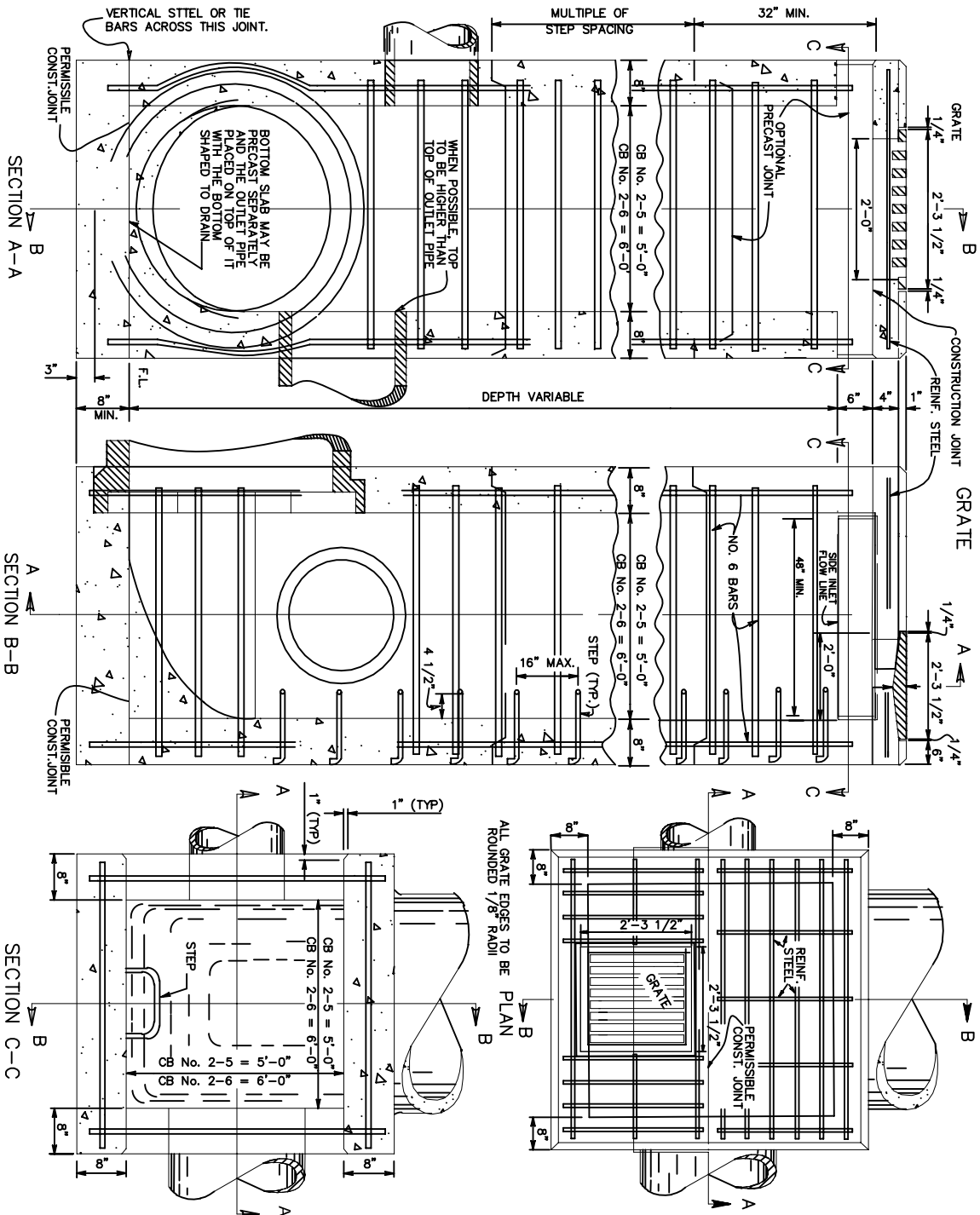


CATCH BASINS No. 2-5 & No. 2-6



NOTES

GRATING- THE DESIGN SHALL BE ESSENTIALLY THE SAME AND EQUALLY AS STRONG AS THE ONE SHOWN HEREON.
MIN. WEIGHT 120 LBS.

STEPS SHALL BE PROVIDED WHERE THE DEPTH EXCEEDS 72" AND SHALL MEET THE REQUIREMENTS OF MH-1

REINFORCING IN THE TOP TO BE NO. 6 BARS 6" CENTER TO CENTER AND NO. 6 TIE BARS SPACED AS SHOWN. MAIN BARS TO CLEAR BOTTOM SLAB 1 1/4". SIDE WALLS TO BE REINFORCED WITH NO. 6 BARS HORIZONTAL IN EACH SIDE, 6' LONG FOR STANDARD NO. 2-5 AND 7' LONG FOR STANDARD NO. 2-6 SPACED 1' CENTER TO CENTER AND NO. 6 BARS IN EACH CORNER, LENGTH = DEPTH + 1 FOOT.

CONCRETE, CAST-IN-PLACE, TO BE CLASS C. ALL PRECAST CONCRETE SHALL MEET THE REQUIREMENTS OF 706.13 WITH 6±2% AIR VOID CONTENT IN THE HARDENED CONCRETE AND BE MARKED WITH THE CATCH BASIN NUMBER.

OPENINGS FOR PIPES SHALL BE O.D. +2" WHEN PREFABRICATED OR FIELD CUT.

LOCATION AND ELEVATION WHEN GIVEN ON THE PLANS IS TOP CENTER OF THE GRATE. WHEN SIDE OPENINGS ARE PROVIDED, ELEVATION SHALL BE THE FLOW LINE OF THE SIDE INLET.

SIDE INLETS SHALL BE PROVIDED ONLY WHEN SPECIFIED ON THE PLANS.

CATCH BASIN SIZE	OUTLET PIPE SIZE
2-5	48" TO 54"
2-6	60" TO 72"

INLETS 2-5 AND 2-6

SCALE : NONE

STD0022