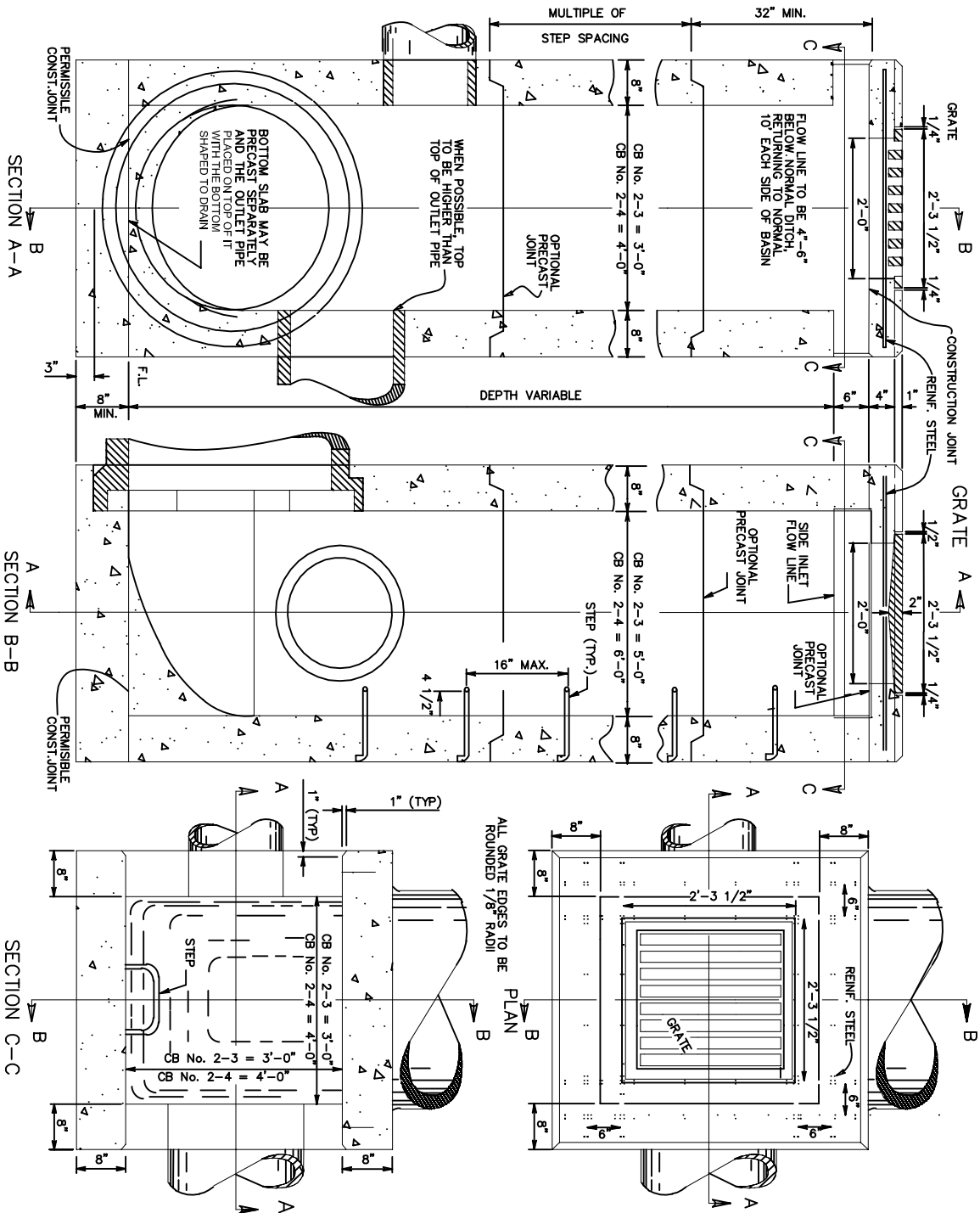


CATCH BASINS No. 2-3 & No. 2-4



NOTES

- GRATING— THE DESIGN SHALL BE ESSENTIALLY THE SAME AND EQUALLY AS STRONG AS THE ONE SHOWN HEREON.
- MIN. WEIGHT 120 LBS.
- BRICK CONCRETE BLOCK OR CAST-IN-PLACE WALLS SHALL HAVE A NOMINAL THICKNESS OF 8" PRECAST WALLS SHALL BE REINFORCED SUFFICIENTLY TO PERMIT SHIPPING AND HANDLING WITHOUT DAMAGE.
- CONCRETE, CAST-IN-PLACE, TO BE CLASS C. ALL PRECAST CONCRETE SHALL MEET THE REQUIREMENTS OF 706.13 WITH 6%± AIR VOID CONTENT IN THE HARDENED CONCRETE AND BE MARKED WITH THE CATCH BASIN NUMBER.
- REINFORCING IN THE TOP TO BE NO. 4 BARS 6" CENTER TO CENTER FOR STANDARD NO. 2-3 USE 8 BARS AND FOR STANDARD 2-4 USE 12 BARS. WHEN PREFABRICATED OR FIELD CUT.
- LOCATION AND ELEVATION WHEN GIVEN ON THE PLANS IS TOP CENTER OF THE GRATE. WHEN SIDE OPENINGS ARE PROVIDED, ELEVATION SHALL BE THE FLOW LINE OF THE SIDE INLET.
- SIDE INLETS SHALL BE PROVIDED WHERE THE DEPTH EXCEEDS 72" AND SHALL MEET THE REQUIREMENTS OF MH-1

CATCH BASIN SIZE	OUTLET PIPE SIZE
2-3	12" TO 33"
2-4	36" TO 42"

INLETS 2-3 AND 2-4

SCALE : NONE

STD0021