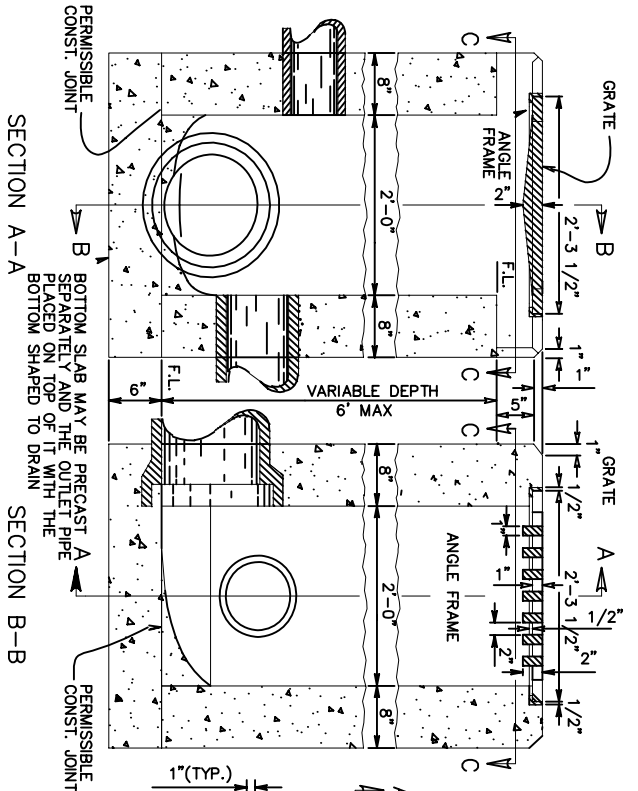
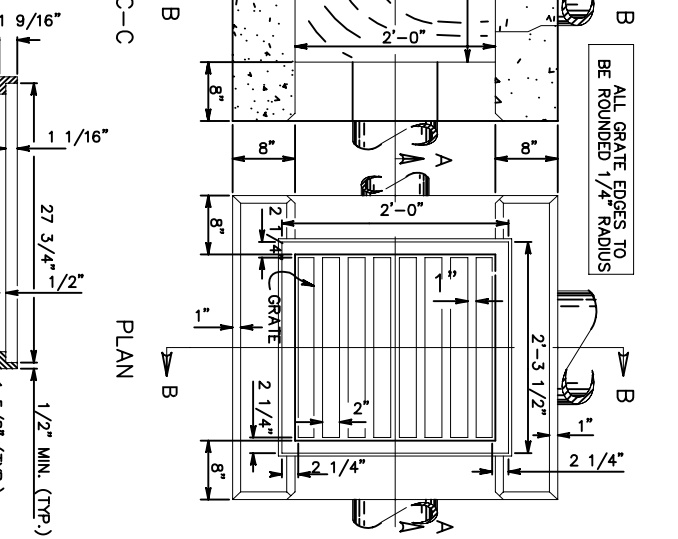


CATCH BASIN No. 2-2A



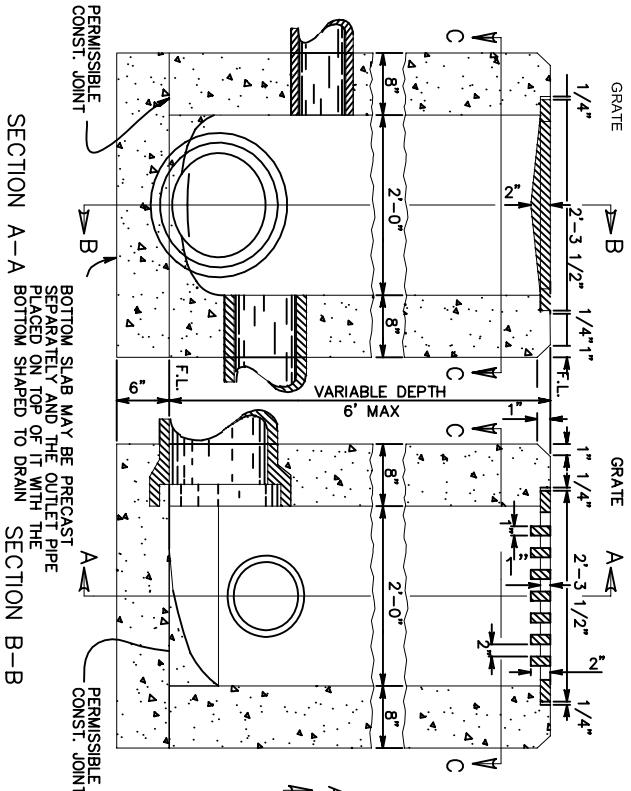
SECTION A-A
SECTION B-B
CATCH BASIN No. 2-2B



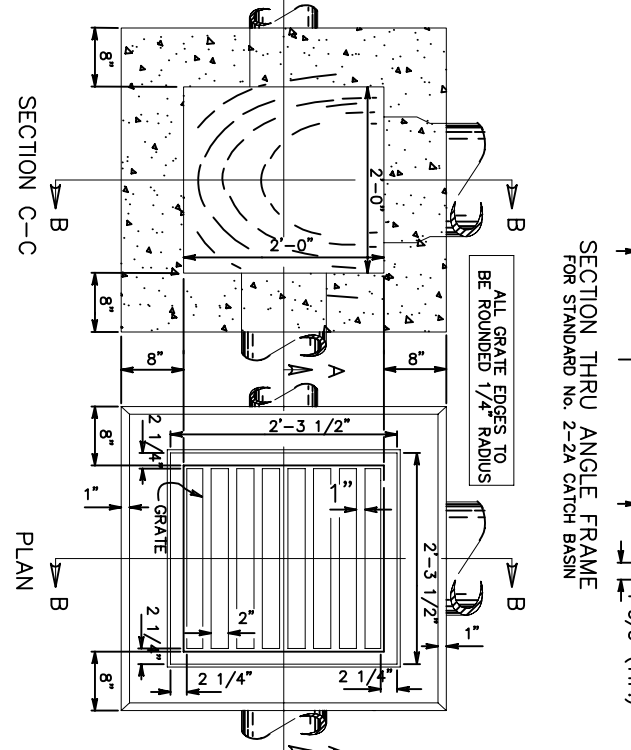
SECTION C-C
PLAN
SECTION THRU ANGLE FRAME
FOR STANDARD No. 2-2A CATCH BASIN

NOTES

- GRATE AND FRAME: THE DESIGN SHALL BE ESSENTIALLY THE SAME AND EQUALLY AS STRONG AS THE ONE SHOWN HEREON. WEIGHT OF GRATE: MIN. 120 LBS. BRICK CONCRETE BLOCK OR CAST-IN-PLACE WALLS HAVE A NOMINAL THICKNESS OF 8" PRECAST WALLS SHALL HAVE A MINIMUM THICKNESS OF 6" AND BE REINFORCED SUFFICIENTLY TO PERMIT SHIPPING AND HANDLING WITHOUT DAMAGE. BRICK OR CONCRETE BLOCK SHALL NOT BE USED ABOVE THE FLOW-LINE OF THE SIDE OPENING FOR TYPE 2-2-A.
- 2-2-A SIDE INLETS TO BE PLACED 4"-6" BELOW NORMAL ELEVATION OF MEDIAN OR DITCH FLOWLINE RETURNING TO NORMAL 10' EACH SIDE OF BASIN.
- 2-2-B GRATE ELEVATION TO BE PLACED 4"-6" BELOW NORMAL DITCH RETURNING TO NORMAL 10' EACH SIDE OF BASIN.
- SIDE INLETS SHALL BE PROVIDED ON BOTH SIDES OF THE 2-2-A CATCH BASIN IN SAGS AND ON UPSTREAM SIDE ONLY WHERE THE DITCH HAS A CONTINUOUS DOWNGRADE PAST THE CATCH BASIN.
- CONCRETE, CAST-IN-PLACE, TO BE CLASS C. ALL PRECAST CONCRETE SHALL MEET THE REQUIREMENTS OF 706.13 WITH 6±2% AIR VOID CONTENT IN THE HARDENED CONCRETE AND BE MARKED WITH CATCH BASIN NUMBER. OPENINGS FOR PIPES SHALL BE O.D. +2" WHEN FABRICATED OR FIELD CUT.



SECTION A-A
SECTION B-B



SECTION C-C
PLAN

INLETS 2-2A & 2-2B

STD0020