



CLERMONT COUNTY ENGINEER'S OFFICE

"Improving your commute"

Patrick J. Manger, P.E.-P.S.
Clermont County Engineer

August 18, 2011

Board of County Commissioners
101 East Main Street
Batavia, Ohio 45103

RE: Lucy Run Cemetery Road Closure
Batavia Township

Dear Commissioners:

Batavia Township has scheduled a culvert replacement on Lucy Run Cemetery Road in Batavia Township. The closure is located between 3765 and 3800 Lucy Run Cemetery Road. The existing culvert was partially obstructed internally due to debris from the channel during the spring storm events. The structure is in poor condition and access is limited for removal of debris requiring a complete replacement. FEMA funds are in the process of becoming available with construction to immediately follow. The closure is "until further notice" due to the above mentioned conditions. To accomplish the planned construction, it will be our recommendation that the road be temporary closed to traffic. The start of the closure will be Friday, **August 26, 2011**.

The Office of Clermont County Engineer shall notify the Communication Center and other agencies. All advanced warning and detour signs will be erected and maintained by the Clermont County Engineer's Office. Attached is the recommended detour.

If we can provide any additional information, please call Todd Gadbury, Bridge Engineer at (513) 732-8865.

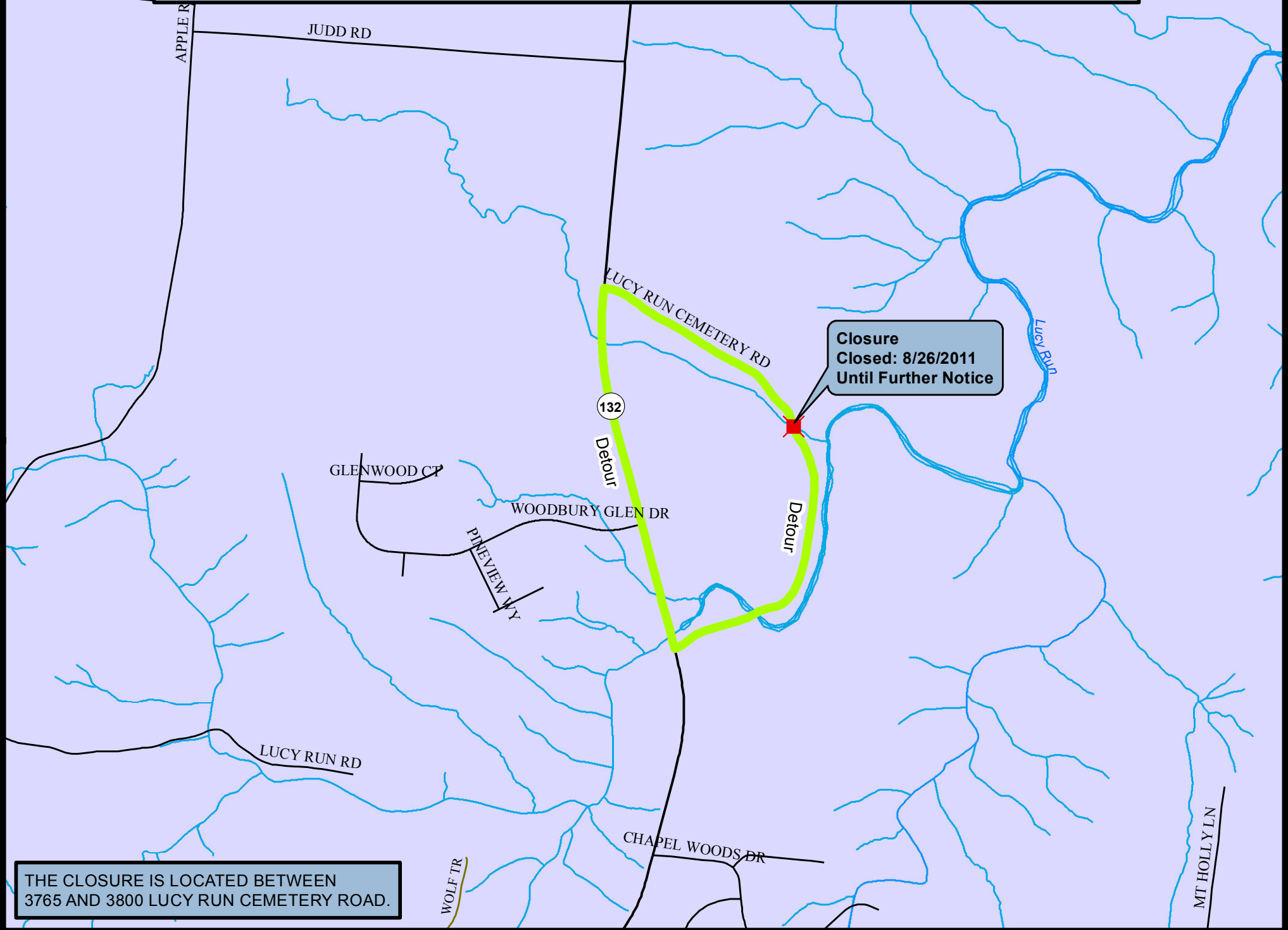
Sincerely,

Patrick Manger, P.E.-P.S.
County Engineer

PM:tcg

cc: Communication Center
Batavia Township
Batavia Township Fire/EMS
West Clermont Schools
BCC
CTC
Sheriff
State Patrol
CCEO Staff
Hwy Ops Staff
CC Office of Public Information

Lucy Run Cemetery Road Culvert Replacement Detour Map



Closure
Closed: 8/26/2011
Until Further Notice

THE CLOSURE IS LOCATED BETWEEN
3765 AND 3800 LUCY RUN CEMETERY ROAD.